

# AMERICAN EAGLE AEP LINE

## PERKINS DIESEL POWERED

### 16 - 138 kW GENERATORS

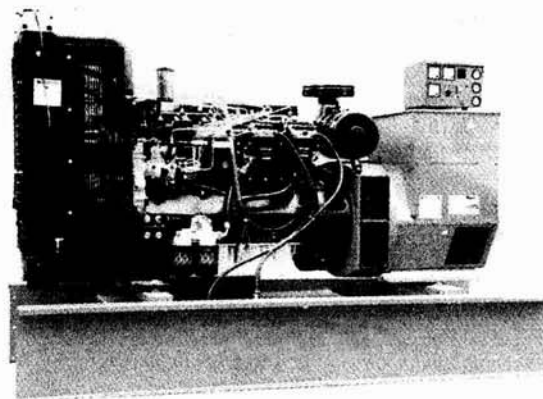
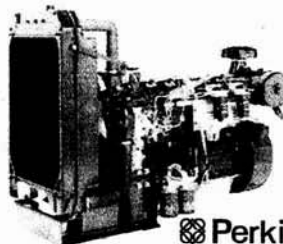
#### THE BEST VALUE!

Powered by the legendary quality of original **Perkins** engines, our AEP generator sets are full of standard features and ready to deliver the power you need at a very affordable price.

All "E" models satisfy the requirements of EPA mobile off-highway and TA Luft regulations.

#### STANDARD FEATURES

- Rugged and reliable 4-cycle water-cooled **Perkins** diesel engine.
- Brushless, class H, drip-proof, 12-lead reconnectable alternator.
- Industrial silencer, protective raincap, elbow pipe, installation clamps.
- Automatic protection shutdown for abnormal temperature or pressure.
- Complete control panel with AC meters, engine gauges, battery charge voltmeter, phase selector switch, hourmeter and start key switch.
- Heavy-duty skid-type steel base frame.
- Integral in-base steel fuel tank with level gauge.
- Cooling radiator designed for tropical temperatures.
- Quality acrylic enamel protective paint.
- Battery, cables, rack, installation hardware.
- One year limited warranty on all components.
- Protective steel guards to isolate moving parts.
- Rubber mounting isolators between unit and frame.



#### OPTIONAL EQUIPMENT

- Weather and acoustic enclosures.
  - Residential and critical silencers.
  - Single phase upgrade alternator.
  - Auto-start module.
  - Electronic speed governor.
  - Oversized fuel tank upgrade.
  - Battery trickle charger.
  - Flexible exhaust connector.
- Many other options available.



#### GENERATOR SET RATINGS

GENSET MODEL	60 Hz 1800 rpm				50 Hz 1500 rpm				ENGINE MODEL	DIMENSIONS AND WEIGHT*				FUEL TANK CAPACITY
	STANDBY		PRIME		STANDBY		PRIME			L	W	H	Dry Wt.	
	kW	kVA	kW	kVA	kW	kVA	kW	kVA		in	in	in	lb (kg)	
AEP23	23	28.8	21	26.3	18	22.5	16	20	3.1524	72	31	57	1265 (573)	45
AEP28	28.5	35.6	26	32.5	24	30	22	27.5	3.1524	72	31	57	1344 (609)	45
AEP30	30	37.5	27.5	34.4	26	32.5	25	31.3	4.236	72	31	57	1624 (736)	45
AEP40	40	50	36	45	33	41.3	29	36.3	4.236	72	31	57	2144 (971)	45
AEP60	60	75	54	67.5	50	62.5	40	50	T4.236	72	31	57	2056 (931)	45
AEP75	75	93.8	67	83.8	57	71.3	52	65	1004.TG	78	37	65	2052 (930)	56
AEP30E	30	37.5	27.5	34.4	26	32.5	25	31.3	1004.40	72	31	57	1584 (718)	45
AEP40E	40	50	36	45	33	41.3	29	36.3	1004.40	72	31	57	1803 (817)	45
AEP60E	60	75	54	67.5	50	62.5	40	50	1004.40T	72	37	65	2052 (930)	56
AEP75E	75	93.8	67	83.8	57	71.3	52	65	1004.40TW	78	37	65	2052 (930)	56
AEP110E	108	135	98.5	123	83	104	75	94	1006.6T	90	37	72	2531 (1147)	56
AEP140E	138.5	173	126	158	103.8	129.75	93	116.25	1006.6TA	95	37	72	2413 (1251)	75

Ratings: [60Hz]: 240V; [50 Hz]: 220V. Ratings applicable for both single-phase (1.0 p.f.) and 3-phase (0.8 p.f.) operation. Many industrial, commercial and residential voltages are available. Specifications are subject to change without notice. Perkins is a trademark of Varsity Perkins. \*1 in. = 2.54 cm; 1 gallon = 3.78 liters.

#### EAGLE GENERATOR

Toll Free (866) 289-2473 ♦ Fax (352) 465-2910

International Info Line (352) 465-7450

PO Box 969, Dunnellon, FL 34430 USA

e-mail: [info@eaglegen.com](mailto:info@eaglegen.com)

web: [www.eaglegen.com](http://www.eaglegen.com)